

Fashion Forecast

by Naomi Fujimoto

Fall Favorites

Update your wardrobe with a few fantastic pieces — a swifty jacket with three-quarter-length sleeves, a bold geometric-print dress, a rich sweater vest or sweater dress, or menswear-inspired shirts or wide-leg trousers. Gray is a prominent color this fall; try it in metallic heather or charcoal. And plaids are everywhere — coats, tights, dresses, shoes, handbags, and caps. In footwear, the menswear influence is prominent: oxfords and spectator pumps are key shoe and boot options. Finally, the biker look is huge. If you're not into leather skirts and jackets, try an accessory like a studded bag or cuff.

For more trendspotting

- bingbangonline.com
- branchjewelry.com
- dallaspridgenjewelry.com
- janehollingerjewelry.com

Thanks to Lela, (414) 727-4855, lelaboutique.com, for the clothing shown here.

The Jacket

Suit up in a bell-sleeved jacket with tailored shorts. A gray fitted sweater peeks out from bracelet-length sleeves.

Make your own

One jewelry option: blue crystals (p. 98) blend beautifully with muted gray and black tones.

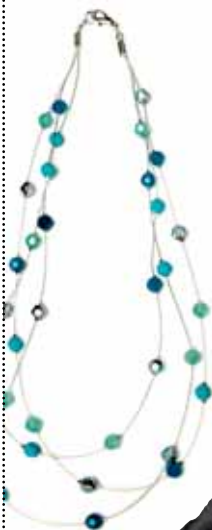


Punctuate with plaid

To incorporate plaid in an understated way, wear a cap.

Geometric links

Round beads and chain links mirror the shape of the buttons.



Ankle boots

Pair black tights with quilted ankle boots to play up this dressy fall look.

The Dress

A patterned dress in shades of copper, teal, and brown shows off our favorite fall tones.



Make your own

A boldly patterned dress requires jewelry that can hold its own: chandelier earrings (p. 62) with strong lines are a great option.



Make your own

Accent the colors in the dress with a patinated copper bracelet (p. 62).



Metallic oxfords

Bronze oxfords with patent leather laces tie a menswear look in with the dress.



The Blouse

Ruffles add texture to a regal, custom-made shirt.



Hoop earrings

A clean geometric shape artfully accents the detailed blouse.



Studded bangle

For biker chic (not biker chick), try a chunky, gold-studded bangle.



Patterned handbag

A lilac-and-green purse brightens up a dark-colored ensemble.

Spectator pumps

Try a seasonal take in tone-on-tone taupe.

