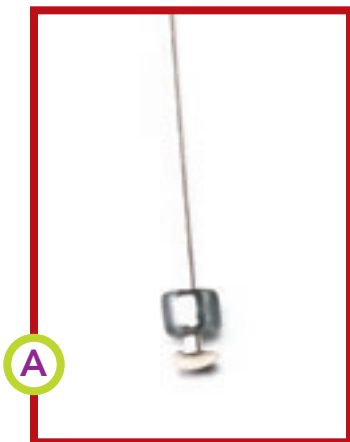


# Holiday style earrings

by Tracy Bretl



**A** 1. String a cylinder bead on a head pin and set aside.



**B** 2. Cut a 1-foot (30cm) piece of Nymo thread and thread a needle. (Black thread was used for illustrative purposes.) String two cylinder beads .



**C** 3. Go back through the first bead. Pull the thread tight.



**D** 4. String the beaded head pin through both beads on the thread.



**5.** String a cylinder bead, a 6mm bicone crystal, and a cylinder bead.



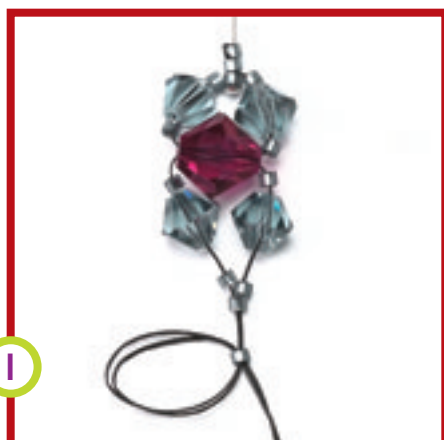
**6.** String an 8mm accent color crystal.



**7.** Repeat step 5 on the other end of the thread, and cross the end through the 8mm crystal.



**8.** On each side, string a cylinder bead, a 6mm bicone crystal, and a cylinder bead. Tighten the threads. String two cylinder beads over both thread ends.



**9.** With both threads, go back through the last cylinder bead. Tighten the threads.



**10.** Tie an overhand knot (Basic Techniques) and use an awl or a pin to slide it snug against the bottom bead.



**11.** Glue the knot and trim the excess thread. Make a plain loop above the top bead (Basic Techniques).



**12.** Open the loop and slide on an earring wire. Close the loop. Make a second earring to match the first. ❖

Contact Tracy in care of BeadStyle.

## SupplyList

*Swarovski crystals in olivine and light siam create the "holly" version; Indian sapphire and fuchsia are an alternate combination.*

- 8 6mm bicone crystals, main color
- 2 8mm bicone crystals, accent color
- 26 size 11° Japanese cylinder beads to match main color
- 2 1½ in. (3.8cm) head pins
- pair of lever-back earring wires
- Nymo B or D beading thread
- beading needle, size 10
- G-S Hypo cement
- scissors
- awl or pin